

AFIB HEM7361T Advanced + AFIB Indicator Blood Pressure Monitor

Product Features



AFIB Indicator

Detects the possibility of Atrial Fibrillation (AFIB), so you can consult your physician for early diagnosis and treatment, which may prevent stroke or heart failure



Irregular Heartbeat Indicator

If an irregular heartbeat is detected, an indicator icon will appear alerting the user to consult with a medical professional



Bluetooth® Connectivity

OMRON connect App Compatible



2 Users x 100 Measurement Memory



360° IntelliWrap™ Cuff

(Medium - Large Cuff - 22 - 42cm)

Snaps easily onto your arm, allowing accurate readings



Intellisense™ Technology

Automatically applies the right amount of pressure for fast, accurate and more comfortable results



Dual Users

Allows you and a second user to share the same device



Hypertension Indicator

Notifies you when blood pressure is outside the normal range according to international guidelines



Cuff Wrapping Guide

Indicator confirms the cuff has been wrapped correctly on the user's arm



Body Movement Indicator

Alerts user if any body movement has occurred during the blood pressure reading



Monitor Pulse



Power Source

4 x AA Batteries



5 Year Standard Warranty

Model: HEM7361T
ARTG No. 137264

Available Now



Size: Wx160mm Dx120mm Hx225mm

Weight: 1.045kg

Barcode: 4975479496837

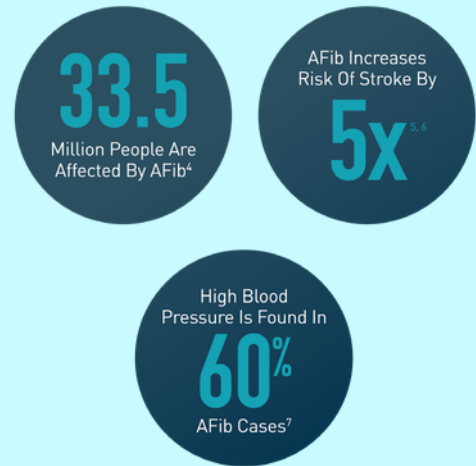
Early Detection Enables Early Treatment

Early detection/diagnosis of Atrial Fibrillation enables a doctor to start appropriate treatment, which may prevent stroke or heart failure^{1,2,3}.

Omron HEM7361T Advanced + AFIB Indicator Blood Pressure Monitor is a great first step to detect any abnormalities in your heart rhythm and in your blood pressure, from the comfort of your home.

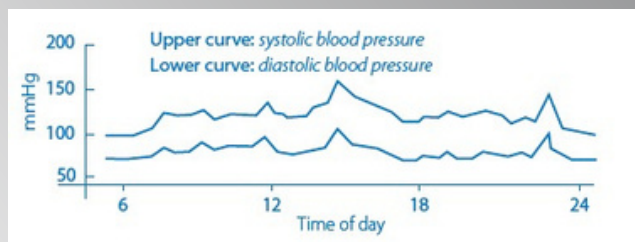
- 1 Odutayo A, Wong CX, Hsiao AJ, Hopewell S, Altman DG et al. (2016) Atrial fibrillation and risks of cardiovascular disease, renal disease, and death: systematic review and meta-analysis. *Bmj* 354 i4482.
- 2 Camm AJ, Lip GY, De Caterina R, Savelieva I, Atar D, Hohnloser SH et al.: 2012 focused update of the ESC Guidelines for the management of atrial fibrillation: an update of the 2010 ESC Guidelines for the management of atrial fibrillation--developed with the special contribution of the European Heart Rhythm Association. *Europace* 2012; 14:1385-1413.
- 3 Hart RG, Benavente O, McBride R, Pearce LA: Antithrombotic therapy to prevent stroke in patients with atrial fibrillation: a meta-analysis. *Ann Intern Med* 1999; 131:492-501.
- 4 Ruff CT, Giugliano RP, Braunwald E, Hoffman EB, Deenadayalu N, Ezekowitz MD et al.: Comparison of the efficacy and safety of new oral anticoagulants with warfarin in patients with atrial fibrillation: a meta-analysis of randomised trials. *Lancet* 2014; 383:955-962.
- 5 Morillo, Carlos A et al. "Atrial fibrillation: the current epidemic." *Journal of geriatric cardiology* : JGC vol. 14,3 (2017): 195-203. doi:10.11909/j.issn.1671-5411.2017.03.011.
- 6 NHS, Atrial Fibrillation, 2018. Available at <https://www.nhs.uk/conditions/atrialfibrillation/complications/>. Last accessed May 2019. 7 Camm AJ, Savelieva I, Bharati S, et al. Atrial tachycardia, flutter, and fibrillation. In: Saksena S, Camm AJ, eds. *Electrophysiological Disorders of the Heart*. Elsevier Churchill-Livingstone, 2005:283-363.

AFIB BY THE NUMBERS



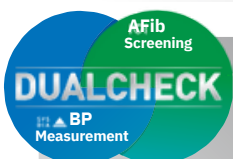
Blood pressure monitoring at home

- Regular self-check can assist Healthcare Professionals to evaluate blood pressure trends.
- A single measurement may not be sufficient for an accurate evaluation.
- Many factors such as physical activity, anxiety, or the time of day can influence blood pressure.
- Thus it is best to try and measure blood pressure at the same time each day to get an accurate indication of any changes in blood pressure.
- Blood pressure is typically low in the morning and increases from afternoon to evening.



Interpreting readings

Only a Healthcare Professional can interpret individual blood pressure readings.



Dual Check for Dual Users

The OMRON HEM7361T measures and detects high blood pressure and AFIB at the same time. This allows users to consult their doctor for early diagnosis and treatment, which may prevent stroke or heart failure.

Designed with families in mind, the dual user function allows for the storage and transmission of measurement data of 2 separate users to their smart phones.

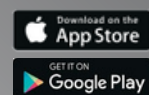
High Blood Pressure Classifications#

	HEALTHCARE PROFESSIONAL ENVIRONMENT	HOME ENVIRONMENT
SYSTOLIC	≥ 140 mmHg	≥ 135 mmHg
DIASTOLIC	≥ 90 mmHg	≥ 85 mmHg

*Adapted from Williams et al. 2018 ESC/ESH Guidelines for the management of arterial hypertension. *European Heart Journal* (2018), 39, 3021-3104

Recording readings

Download the free OMRON connect App to easily track your readings wirelessly by syncing to your smartphone. Results can then be easily shared with your healthcare professional.



Always read & follow the instructions for use & health warnings. For people with high blood pressure. Consult your doctor to evaluate the readings. Check your device periodically for accuracy. A diagnosis of Atrial Fibrillation (AFIB) can only be confirmed by Electrocardiogram (ECG). If the AFIB symbol appears, consult your doctor.

*Source: "Global Home Appliance Market Comprehensive Survey 2021", Fuji Keizai Co., Ltd (data for 2020) **IQVIA, National Australian Pharmacy Sell-Out Sales, Blood Pressure Monitors Jan21